



- Construction Machinery Rental
- Ready Mix Concrete
- Operation & Maintenance
- CMMS (Construction Machinery Management Ser.)
- Annual Maintenance Contract
- Pile Foundation Services
- Scaffolding Rental with E & D Services
- Sales - Parts - After Sales Services
- Fuel Management System

## Prasad Multi Services (P) Ltd.

(ISO 9001:2008 & BS OHSAS 18001:2007 )

306 Zodiac Square, Opp. Gurudwara, S. G. Road, Ahmedabad - 380 054, Gujarat (India)  
Phone : +91 79 268 559 44 | E-mail : [info@pmsindia.in](mailto:info@pmsindia.in) | Website : [www.pmsindia.in](http://www.pmsindia.in)

***Value - Packed Services***



# Construction Machinery Rental

## **PMS - A leading Machinery Rental company having PAN India presence since 2 decades**

Machinery Rental is the flagship service of PMS, equipped with leading brands of Construction & Infrastructure machinery in custom combinations. We offer extensive and wide range of machinery to construction and infrastructure industry. The combination of proven, reliable and expertly maintained fleet backed by proficient services to our customers is the reason why we have been chosen in every market segment we cater.

Machinery in various capacities are rented out with in-house operators and experienced managers including Construction Machinery Management Services backed-up by specially designed Software.

Hire, use & forget about them. We help you to keep your focus on your project, while we are busy making sure that the execution is smooth, with almost no breakdown and keeping safety in top priority.



## Ready Mix Concrete

PMS provides Ready Mix Concrete to construction projects where the specifications and ontime uninterrupted supply are critical. We have tied up with leading developers, infrastructure companies, leading RMC companies for supply against specific requirements.

PMS owns wide range of fleet of Concrete Machinery like Mobile/Stationary Batching Plants, Transit Mixers, Stationary/Truck Mounted Concrete Pumps, Boom Placers, Loaders.

This Services includes operation and maintenance and is backed by construction machinery management system through specially designed software.

Services are available across pan India. Clients can access online production and pumping data through PMS Server.



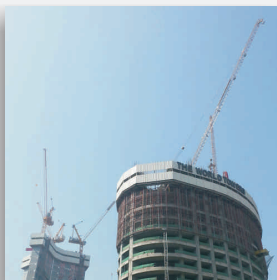
## Operation & Maintenance

PMS undertakes turnkey contracts for operation and maintenance of client owned machineries such as heavy earth moving machinery, construction and infrastructure machinery, mobile cranes, tower cranes, mechanical handling system (MHS).

Our well experienced team of engineers, skilled operators, technicians are trained to handle work for long hours with optimum efficiency.

In addition to operation, our services includes preventive, breakdown and routine maintenance. We execute minor/major repair jobs at clients' projects site including sourcing of spare parts & consumables to help you to save time and controlling expenses.

Our team works closely with the customers to provide efficient, effective and reliable services supported by reporting system through tailor - made software specially developed for such applications.



## CMMS (Construction Machinery Management Services)

This is good news for our corporate clients and fleet owners. Purpose and aim of this concept is to provide transparent report of machinery health & maintenance status. This will ultimately increase uptime, machine life and resale value and reduce machine downtime, parts inventory & maintenance costs.

● Audit and tracking of preventive plus pro active maintenance as per manufacturing standard of almost all kind of construction machinery at site. ● Substantial improvement in efficiency of work site. ● Empowering by providing right information at right time to right person using ORECS. ● History of CMMS in ORECS will available to access online. ● CMMS can be made available in all India as well as Abroad.



## Annual Maintenance Contract

With our rich experience over 2 decades in the field of maintenance & after sales service, PMS provides AMC services for wide range of Construction, Infrastructure, Earth Moving Machineries, Stationery / Mobile Cranes and other equipments. Our team of trained manpower keeps your machines in good working conditions for saving time, better output under the circumstances. We attends scheduled preventive maintenance, routine service checks as per OEM recommendations to take corrective actions and also makes unscheduled calls.

We offer AMC services with both the options of without OR with spares & consumables. Customer provides us space for work and facilities for storage of spares & consumables. This will enable you to save time as well costs with minimum downtime as the services are provided at client's site.

We constantly strive to provide the best quality services to our clients and this has become part of our company's mission.



## Pile Foundation Services

PMS now owns and operates some of the most technologically advanced Piling Rigs across India.

PMS has a team of experienced and dedicated piling specialists. In addition, our engineering staffs, with many years of field experience gained on a wide variety of projects, we have acquired skills to meet our clients' requirements.

We also use a wide range of specialized and modern equipments to build foundations which suits all sorts of ground condition. We offer a comprehensive and integrated approach to construction & infrastructure projects of our clients.

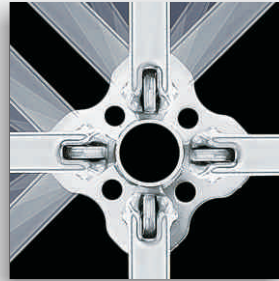




## Scaffolding Rental with E & D Services

PMS has joined hands with PERI for handling an extremely wide range of scaffolding tasks with type tested modular scaffolding system with integrated safety features which allows the same components to be used as shoring, stair towers, reinforcement scaffold or working platforms. In addition, numerous other applications are possible e.g. as suspended scaffold.

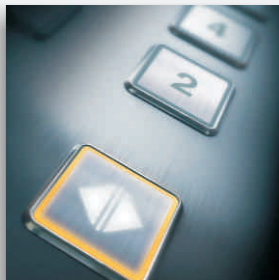
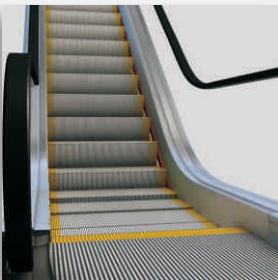
This means that on-site material requirements are automatically reduce and utilization rate increase. With PERI construction & maintenance progress can be carried out extremely efficiently and safety levels for site personnel rises considerably.



## Sales - Parts - After Sales Services

PMS has a Team of Professionals in handling entire cycle involved in product/service promotion including marketing, sales, spares and after sales services for multiple line of business in the field of construction equipment, capital items and allied products.

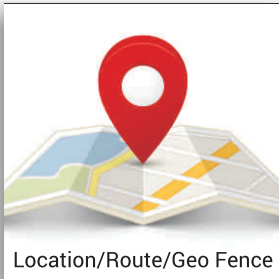
We have an experience for securing and servicing big-ticket institutions and corporate accounts as well as administrating international marketing initiatives. We have defined and implemented systems and processes for sales and service operations also applied customer centric, spares/service initiatives to improve client satisfaction index.



# Fuel Management System

Real time quantity in Fuel Tank, Separate reading for Dual fuel tanks / Dual Engines, Maximum Capacity of Fuel Tank, Consumption, Total fuel consumption, Average fuel consumption, Maximum / Minimum fuel Consumption, Fuel Theft, Sudden drop in fuel tank, Irregular fuel consumption pattern, Mileage, Best mileage / Worst mileage, Real time Range in Kilometers with available fuel in Tank, Fuel Cost, Per Kilometer costing, Per Hour costing, Maximum cost / minimum cost per hour / kilometer, Optimum range of Fuel Cost.

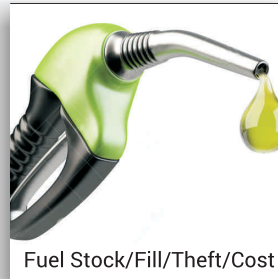
Other normal features of GPS like Location, Speed, Stoppage, Route, Geofence, Engine start/stop/working hours, Distance travelled, Moving status, all different types of alerts is included as a standard features.



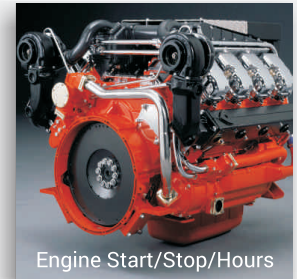
Location/Route/Geo Fence



Speed/Distance/Over Speed



Fuel Stock/Fill/Theft/Cost



Engine Start/Stop/Hours

## Clientele

